

Nutrition Facts

6 servings
per container

Serving size
1 box (28g)

Calories
per serving **90**

Amount/serving	% Daily Value*	Amount/serving	% Daily Value*
Total Fat 0g	0%	Total Carb. 22g	8%
Sat. Fat 0g	0%	Fiber 2g	7%
Trans Fat 0g		Total Sugars 18g	
Cholesterol 0mg	0%	Incl. 0g Added Sugars	0%
Sodium 10mg	0%	Protein <1g	

Vit. D 0mcg 0% • Calcium 20mg 2% • Iron 0.5mg 2% • Potas. 210mg 4%
* The % Daily Value (DV) tells you how much a nutrient in a serving of food contributes to a daily diet. 2,000 calories a day is used for general nutrition advice.

INGREDIENTS: RAISINS.

RAISINS ARE NOT A CALORIE REDUCED FOOD.
SEE NUTRITIONAL FACTS PANEL.

RAISINS ARE MECHANICALLY STEMMED AND MAY CONTAIN
AN OCCASIONAL GRAPE STEM OR WOOD PIECE.

SUN-MAID GROWERS OF CALIFORNIA
13525 S. BETHEL AVE., KINGSBURG, CA 93631 U.S.A.
® TRADEMARK OF SUN-MAID GROWERS OF CALIFORNIA
AND © SUN-MAID GROWERS OF CALIFORNIA, 2019.
PRODUCT OF U.S.A.



6 1 OZ.
BOXES

NET WEIGHT 6 OZ. (170g)



SUN-MAID Raisins



sunmaid.com





PACKER

Pineapple

PINEAPPLE, TIDBIT IN JUICE CANNED

8052169



6/#10 CN

ADD TO ORDER

Quantity Available
CS: 999+

Next Expected Restock
08/01

Product Description

Ingredients
PINEAPPLE, PINEAPPLE JUICE, SUGAR.

Product Information
Class: 17 - FRUITS & VEGETABLES, CANNED & DRIED
Category: 139 - FRUITS, CANNED
Group: 1797 - PINEAPPLE, CANNED

Shipping Information

Physical Attributes

Gross Weight:	46 LB	Length:	18.75 IN
Net Weight:	42 LB	Cube:	1.038 CF
Height:	7.5 IN	Catch Weight:	No
Width:	12.75 IN		

Storage Information

USF Storage:	DRY FOOD
Min. Temperature:	33 fa
Max. Temperature:	90 fa

Nutrition Facts

138 Servings Per Container

Serving Size (133g)

Amount Per Serving

Calories 80

% Daily Value *

Total Fat	0g	0%
Saturated Fat	0g	0%
Trans Fat	0g	
Cholesterol	0mg	0%
Sodium	0mg	0%
Total Carbohydrate	21g	7%
Dietary Fiber	1g	2%
Total Sugars	20g	
Includes 0g Added Sugars		0%

Protein 1g

Vitamin A	2%
Vitamin C	15%
Calcium	0%
Iron	2%

Supplemental Facts

% Daily Value *

None specified at this time

* The % Daily Value (DV) tells you how much a nutrient in a serving of food contributes to a daily diet. 2,000 calories a day is used for general nutrition advice.

Report Discrepancies

Ingredients, Allergens & Nutrition Information

IMPORTANT: Product information, including ingredients, allergens and nutritional information, is provided by manufacturers/suppliers, and includes information from the Global Data Synchronization Network (GDSN) and other third party sources such as the United States Department of Agriculture. We know that allergen information is important to many customers, so we are providing product information from the manufacturers/suppliers for the FDA's top allergens (<https://www.fda.gov/food/food-labeling-nutrition/food-allergies>), along with other select ingredients. This

Product Description

Sliced pears

Additional Description

IMPORTED SOUTH AFRICA.

Ingredients

PEARS, WATER, CANE SUGAR

Product Information

Class: 17 - FRUITS & VEGETABLES, CANNED & DRIED

Category: 139 - FRUITS, CANNED

Group: 1779 - PEARS, CANNED

Manufacturer Information

PORT ROYAL SALES LTD

Manufacturer Product #: 8144

Preparation & Cooking

Preparations and Cooking Instructions

Ready to eat product.

Handling Instructions

Stored in dry ambient temperatures.

Serving Suggestions:

Serve in dishes straight out of can.

Nutrition Facts

Servings Per Container

Serving Size (.05cu)

Amount Per Serving

Calories 83

	% Daily Value *
Total Fat 0g	0%
Saturated Fat 0g	0%
Trans Fat 0g	
Cholesterol 4mg	0%
Sodium 20mg	0%
Total Carbohydrate .1g	0%
Dietary Fiber 18.1g	0%
Total Sugars 1g	
Includes 0g Added Sugars	0%
Protein 0g	
Vitamin A	0%
Vitamin C	0%
Calcium	0%
Iron	0%

Supplemental Facts

	% Daily Value *
None specified at this time	
* The % Daily Value (DV) tells you how much a nutrient in a serving of food contributes to a daily diet. 2,000 calories a day is used for general nutrition advice.	
Report Discrepancies	

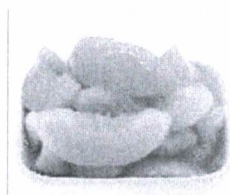
Shipping Information

Physical Attributes			
Gross Weight:	47 LB	Length:	18 IN
Net Weight:	46 LB	Cube:	.875 CF
Height:	7 IN	Catch Weight:	No
Width:	12 IN		

Storage Information	
USF Storage:	DRY FOOD
Min. Temperature:	33 fa
Max. Temperature:	90 fa

Ingredients, Allergens & Nutrition Information

IMPORTANT: Product information, including ingredients, allergens and nutritional information, is provided by manufacturers/suppliers, and includes information from the Global Data Synchronization Network (GDSN) and other third party sources such as the United States Department of Agriculture. We know that allergen information is important to many customers, so we are providing product information from the manufacturers/suppliers for the FDA's top allergens (<https://www.fda.gov/food/food-labeling-nutrition/food-allergies>), along with other select ingredients. This information may not cover potential cross-contact risks or alternate forms of the allergen(s). Product formulations are subject to change and nutritional values can vary due to production, seasonal and other changes. Please always review the ingredients, allergens, nutrition information and other product information on the product packaging delivered to your location. US Foods does not assume any legal liability and makes no warranty or guaranty, express or implied, regarding the completeness or accuracy of this information. Product images are prov



Primary ASYS #	5090642
Secondary ASYS #	
Primary PSYS #	162777
Product Master #	870366
USF Product #	870366
Manufacturer Product #	
Item ID	12392860
Cash and Carry Eligible	No

[illegible]

Merchandising Business Unit Name	GROCERY & DAIRY - 100001		
Merchandising Director Name	COMMODITY GROCERY - 10003		
Merchandising Desk Name	CANNED & FROZEN FRUIT & VEG - 1011		
Merchandising Category Name	CANNED FRUIT & PIE FILLING - 45		
Merchandising Business Unit Associate	GROCERY & DAIRY		
Merchandising Director Associate	DOLLARD		
Merchandising Desk Associate	WEIDMANN		
Product Search Keywords			
Benefits			
Serving Suggestions			
Preparation Instructions			
Cat Seg Type 01	CANNED FRUIT PIE FILLING - TYPE	Value	CANNED FRUIT
Cat Seg Type 02	CANNED FRUIT PIE FILLING - VARIETY	Value	PEACH
Cat Seg Type 03	CANNED FRUIT PIE FILLING - FORM	Value	SLICED
Cat Seg Type 04	CANNED FRUIT PIE FILLING - PACKED IN	Value	LIGHT SYRUP
Cat Seg Type 05	CANNED FRUIT PIE FILLING - USDA GRADE	Value	NOT SPECIFIED
Cat Seg Type 06	CANNED FRUIT PIE FILLING - ORGANIC CLAIM	Value	NO ORGANIC CLAIM
Cat Seg Type 07	CANNED FRUIT PIE FILLING -	Value	NO NON-GMO CLAIM



United States Department of Agriculture



USDA Foods
in Schools

100219- Peaches, Sliced, Extra Light Syrup, Canned
Category: Fruit



Product Description

- This item is U.S. Grade B canned sliced peaches packed in extra light syrup or fruit juice. This product is available in cases containing six #10 cans.

Crediting/Yield

- One case yields about 108 1/2-cup servings of drained, sliced peaches.
- CN Crediting: 1/2 cup sliced peaches credit as 1/2 cup fruit.

Culinary Tips and Recipes

- Peaches can be added to fruit salads, used as a topping for yogurt, or served as a side at breakfast, lunch or afterschool snack.
- Use sliced peaches to make a peach sauce or glaze for chicken.
- For culinary techniques and recipe ideas, visit the [Institute of Child Nutrition](#) or [USDA's Team Nutrition](#).

Food Safety Information

- For more information on safe storage and cooking temperatures, and safe handling practices, please refer to: [Developing a School Food Safety Program Based on the Process Approach to HACCP Principles](#).

Visit us at www.fns.usda.gov/usda-fis

Nutrition Facts

Serving size: 1/2 cup (124g) peaches, canned, sliced, extra light syrup

Amount Per Serving

Calories 60

Total Fat 0g

Saturated Fat 0g

Trans Fat 0g

Cholesterol 0mg

Sodium 10mg

Total Carbohydrate 14g

Dietary Fiber 0g

Sugars 12g

Protein 0g

Source: USDA Foods Vendor Labels

Allergen Information: Please refer to allergen statement on the outside of the product package for vendor-specific information. For more information, contact the product manufacturer.

Nutrient values in this section are from the USDA Food Composition Database or are representative values from USDA Foods vendor labels. Please refer to the product's Nutrition Facts label or ingredient list for product-specific information.

January 2020



PACKER

Orange

ORANGE, MANDARIN BROKEN SEGMENT IN LIGHT-SYRUP CANNED

1431022



6/10 CN

ADD TO ORDER

Quantity Available
CS: 139

Next Expected Restock
07/19

Product Description

Additional Description

ORANGE, MDN BRKN SGMT LS

Ingredients

BROKEN SEGMENT MANDARIN ORANGES, WATER, SUGAR.

Product Information

Class: 17 - FRUITS & VEGETABLES, CANNED & DRIED

Category: 139 - FRUITS, CANNED

Group: 1762 - ORANGES, CANNED

Shipping Information

Physical Attributes			
Gross Weight:	45 LB	Length:	18.75 IN
Net Weight:	40 LB	Cube:	1.038 CF
Height:	7.5 IN	Catch Weight:	No
Width:	12.75 IN		

Storage Information	
USF Storage:	DRY FOOD
Min. Temperature:	32 fa
Max. Temperature:	95 fa

Nutrition Facts

Servings Per Container		
Serving Size	(100g)	
Amount Per Serving		
Calories	61	
		% Daily Value *
Total Fat	.1g	.15%
Saturated Fat	.01g	.06%
Trans Fat	0g	
Cholesterol	0mg	0%
Sodium	6mg	.25%
Total Carbohydrate	16.19g	5.4%
Dietary Fiber	.7g	2%
Total Sugars	15.49g	
Includes 0g Added Sugars		0%
Protein	.5g	
Vitamin A		16.8%
Vitamin C		33%
Calcium		.7%
Iron		2.06%

Supplemental Facts

		% Daily Value *
Vitamin D 0iu		0%
Folic Acid 5mcg		0%
Phosphorus 10mg		0%
Polyunsaturated Fat .02g		0%
Monosaturated Fat .01g		0%
Ash .19g		
Copper .04mg		0%
Magnesium 8mg		0%
Niacin .44mg		0%
Pantothenic Acid .12mcg		0%
Potassium 78mg		0%
Riboflavin .04mg		0%
Thiamin .05mg		0%
Vitamin E .1		0%
Vitamin B12 0mcg		0%
Vitamin B6 .04mg		2.1%
Water 83.06g		
Zinc .24mg		0%

* The % Daily Value (DV) tells you how much a nutrient in a serving of food contributes to a daily diet. 2,000 calories a day is used for general nutrition advice.

Report Discrepancies

Product Description

Ingredients **Fruit Cocktail**

DICED PEACHED, DICED PEARS, WATER, PINEAPPLE SEGMENTS, SEEDLESS GRAPES, SUGAR, CHERRY HAVLES. (CHERRIES ARE COLORED WITH FD&C RED #3

Product Information

Class: 17 - FRUITS & VEGETABLES, CANNED & DRIED

Category: 139 - FRUITS, CANNED

Group: 1736 - FRUITS, MIXED, CANNED

Shipping Information

Physical Attributes			
Gross Weight:	46.85 LB	Length:	18.6 IN
Net Weight:	41 LB	Cube:	.9782 CF
Height:	7.1 IN	Catch Weight:	No
Width:	12.8 IN		

Storage Information	
USF Storage:	DRY FOOD
Min. Temperature:	32 fa
Max. Temperature:	95 fa

Nutrition Facts

Servings Per Container	
Serving Size	(124g)
Amount Per Serving	
Calories	60
% Daily Value *	
Total Fat 0g	0%
Saturated Fat 0g	0%
Trans Fat 0g	
Cholesterol 0mg	0%
Sodium 10mg	0%
Total Carbohydrate 14g	5%
Dietary Fiber 2g	5%
Total Sugars 17g	
Includes 0g Added Sugars	0%
Protein 1g	
Vitamin A	4%
Vitamin C	2%
Calcium	0%
Iron	0%

Supplemental Facts

% Daily Value *

None specified at this time

* The % Daily Value (DV) tells you how much a nutrient in a serving of food contributes to a daily diet. 2,000 calories a day is used for general nutrition advice.

Report Discrepancies

Ingredients, Allergens & Nutrition Information

IMPORTANT: Product information, including ingredients, allergens and nutritional information, is provided by manufacturers/suppliers, and includes information from the Global Data Synchronization Network (GDSN) and other third party sources such as the United States Department of Agriculture. We know that allergen information is important to many customers, so we are providing product information from the manufacturers/suppliers for the FDA's top allergens (<https://www.fda.gov/food/food-labeling-nutrition/food-allergies>), along with other select ingredients. This information may not cover potential cross-contact risks or alternate forms of the allergen(s). Product formulations are subject to change and nutritional values can vary due to production, seasonal and other changes. Please always review the ingredients, allergens, nutrition information and other product information on the product packaging delivered to your location. US Foods does not assume any legal liability and makes no warranty or guaranty, express or implied, regarding the completeness or accuracy of this information. Product images are provided for reference only and may not reflect current packaging.



United States Department of Agriculture



USDA Foods
in Schools

100212 - Mixed Fruit, Extra Light Syrup, Canned Category: Fruit



Product Description

- This item consists of U.S. Grade B diced peaches, diced pears, and whole seedless grapes in the following proportions: 40-60% peaches, 20-45% pears, and 15-25% grapes. The fruit is packed in extra light syrup or fruit juice. This product is available in cases with six #10 cans.

Crediting/Yield

- One case yields about 102 ½ -cup servings of drained mixed fruit.
- CN Crediting: ½ cup mixed fruit credits as ½ cup fruit.

Culinary Tips and Recipes

Serve mixed fruit chilled or combine with other fresh, canned, or frozen fruit to make colorful fruit cups.

- For culinary techniques and recipe ideas, visit the [Institute of Child Nutrition](#) or [USDA's Team Nutrition](#).

Food Safety Information

- For more information on safe storage and cooking temperatures, and safe handling practices, please refer to: [Developing a School Food Safety Program Based on the Process Approach to HACCP Principles](#).

Visit us at www.fns.usda.gov/usda-fis

Nutrition Facts

Serving size: 1/2 cup (126g) mixed fruit, extra light syrup

Amount Per Serving

Calories 60

Total Fat 0g

Saturated Fat 0g

Trans Fat 0g

Cholesterol 0mg

Sodium 10mg

Total Carbohydrate 17g

Dietary Fiber 0g

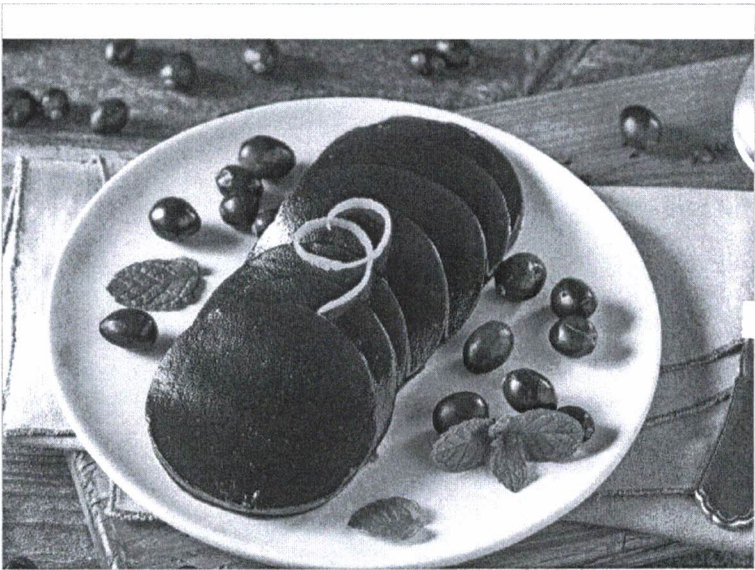
Sugars 14g

Protein 0g

Source: USDA Foods Vendor Labels

Allergen Information: Please refer to allergen statement on the outside of the product package for vendor-specific information. For more information, contact the product manufacturer directly.

Nutrient values in this section are from the USDA Food Composition Database or are representative values from USDA Foods vendor labels. Please refer to the product's Nutrition Facts label or ingredient list for product-specific information.



MONARCH

Cranberry Sauce

CRANBERRY SAUCE, JELLIED CANNED

2328490

6/#10 CN

ADD TO ORDER

Quantity Available
CS: Out of Stock

Next Expected Restock
07/19

Product Description

Overview

Monarch Jellied Cranberry Sauce - a delicious combination of sweet and tart cranberries in every bite! Our jellied cranberry sauce adds an extra touch to any entrée or meal - it's the perfect spread on seasonal sandwiches or s a tasty side dish too! Enjoy the classic taste of cranberry sauce any time of the year...don't just limit your taste buds to the holidays! Perfect for bars restaurants healthcare hotels and other food-serving establishments.

Features

- Gluten Free
- Low in Sodium
- Shelf Stable

Benefits

- Gluten Free
- Low in Sodium
- Shelf Stable

Ingredients

Cranberries, High Fructose Corn Syrup, Water, Corn Syrup, Citric Acid.

Product Information

Class: 17 - FRUITS & VEGETABLES, CANNED & DRIED

Category: 139 - FRUITS, CANNED

Group: 1619 - CRANBERRY SAUCE, CANNED

Manufacturer Information

MONARCH
Manufacturer Product #: 161513

Preparation & Cooking

Preparations and Cooking Instructions

Refrigerate after opening in a separate non-metal container

Handling Instructions

N/A,N/A

Nutrition Facts

282 Servings Per Container

Serving Size (70g)

Amount Per Serving

Calories 110

	% Daily Value *
Total Fat 0g	0%
Saturated Fat 0g	0%
Trans Fat g	
Cholesterol 0mg	0%
Sodium 10mg	0%
Total Carbohydrate 28g	10%
Dietary Fiber 1g	2%
Total Sugars 24g	
Includes 23g Added Sugars	46%
Protein 0g	
Vitamin A	0%
Vitamin C	0%
Calcium	0%
Iron	0%

Supplemental Facts

	% Daily Value *
Vitamin D 0mcg	0%
Polyunsaturated Fat 0g	0%
Monosaturated Fat 0g	0%
Potassium 0mg	0%
Vitamin E .83mg	0%
Vitamin B12 0mcg	0%
Vitamin B6 .01mg	0%

* The % Daily Value (DV) tells you how much a nutrient in a serving of food contributes to a daily diet. 2,000 calories a day is used for general nutrition advice.

Report Discrepancies



1.16OZ OCEAN SPRAY® CRAISINS® DRIED CRANBERRIES - ORANGE



PRODUCT INFORMATION

UPC	Size	Units/ Case	Each GTIN	Each Length (in)	Each Width (in)	Each Height (in)	Case GTIN	Case Length (in)	Case Width (in)	Case Height (in)	Case Gross Weight (lbs)	Case Net Weight (lbs)	Pallet GTIN	Cases/ Layer	Layers/ Pallet	Pallet Gross Weight (lbs)
22545	1.16oz	200	00031200025456	.42	3.5	3.25	00031200225450	15.188	11.563	9.375	16.34	14.4	80031200225456	10	5	818.25

INGREDIENTS:

Cranberries, Sugar, Citric Acid, Natural Flavors. Refined sunflower oil is used as a processing aid.

ALLERGENS:

None present

ADDITIONAL ATTRIBUTES:

No artificial flavors or preservatives

Peanut free, gluten free, and fat free

Kosher

Nutrition Facts

Serving Size 1.16oz (32.9g) 1/4 cup
Servings Per Container 1

Amount Per Serving

Calories 110

% Daily Value*

Total Fat 0g **0%**

Sodium 0mg **0%**

Total Carbohydrate 27g **9%**

Dietary Fiber 2g **8%**

Sugars 24g

Protein 0g

Not a significant source of calories from fat, saturated fat, trans fat, cholesterol, vitamin A, vitamin C, calcium, and iron.

*Percent Daily Values are based on a 2,000 calorie diet.

Is Kosher?	Juice Percentage	Shelf Life	Storage Condition	Min Storage Temp	Max Storage Temp	Gluten Status	Country of Origin
Yes	-	270 days	Ambient	40	65	Gluten Free	USA



FAMILY OF COMPANIES

Peterson Farms Fresh, LLC

3104 W. Baseline Road • PO Box 95 • Shelby, MI 49455
Phone: 231-861-7101 • Fax: 231-861-2274

Apple Sauce Cinnamon, Unsweetened

MFG #ASA10013



- 96 / 4.5oz case pack
- 4.5 oz = 1/2 cup serving (USDA standards)
- USDA Raw Apple commodity code 110149
- Shelf stable in dry storage
- UPC 8 82266 10065 2
- Minimum 2 pallet order or 128 cases total (64 cs per pallet – 1 flavor)
- Gluten Free
- Vegan

Authorized Representative

Jaime Merrill
Corporate QA Technical Sr. Manager
Peterson Farms Fresh, LLC

January 31, 2023

NOTE: Availability and flavor subject to change.

Nutrition Facts

96 servings per container

Serving size 1 Cup (128g)

Amount per serving

Calories 50

% Daily Value*

Total Fat 0g 0%

Saturated Fat 0g 0%

Trans Fat 0g

Cholesterol 0mg 0%

Sodium 0mg 0%

Total Carbohydrate 14g 5%

Dietary Fiber 1g 4%

Total Sugars 12g

Includes 0g of Added Sugars 0%

Protein 0g

Vitamin D 0mcg 0% • **Calcium** 5mg 0%

Iron 0mg 0% • **Potassium** 95mg 2%

* The % Daily Value (DV) tells you how much a nutrient in a serving contributes to a daily diet. 2,000 calories a day is used for general nutrition advice.

INGREDIENTS: APPLES, WATER, NATURAL FLAVOR, CINNAMON, ASCORBIC ACID (VITAMIN C).





FAMILY OF COMPANIES

Peterson Farms Fresh, LLC

3104 W. Baseline Road • PO Box 95 • Shelby, MI 49455

Phone: 231-861-7101 • Fax: 231-861-2274

Apple Sauce Original, Unsweetened

MFG #ASA10001



- 96 / 4.5oz case pack
- 4.5 oz = 1/2 cup serving (USDA standards)
- USDA Raw Apple commodity code 110149
- Shelf stable in dry storage
- UPC 8 82266 10064 5
- Minimum 2 pallet order or 128 cases total (64 cs per pallet – 1 flavor)
- Gluten Free
- Vegan

Authorized Representative

Jaime Merrill
Corporate QA Technical Sr. Manager
Peterson Farms Fresh, LLC

January 31, 2023

NOTE: Availability and flavor subject to change.

Nutrition Facts

96 servings per container

Serving size 1 Cup (128g)

Amount per serving

Calories 50

% Daily Value*

Total Fat 0g 0%

Saturated Fat 0g 0%

Trans Fat 0g

Cholesterol 0mg 0%

Sodium 0mg 0%

Total Carbohydrate 14g 5%

Dietary Fiber 1g 4%

Total Sugars 12g

Includes 0g of Added Sugars 0%

Protein 0g

Vitamin D 0mcg 0% • Calcium 5mg 0%

Iron 0mg 0% • Potassium 95mg 2%

* The % Daily Value (DV) tells you how much a nutrient in a serving contributes to a daily diet. 2,000 calories a day is used for general nutrition advice.

INGREDIENTS: APPLES, WATER, ASCORBIC ACID (VITAMIN C).





FAMILY OF COMPANIES

Peterson Farms Fresh, LLC

3104 W. Baseline Road • PO Box 95 • Shelby, MI 49455

Phone: 231-861-7101 • Fax: 231-861-2274

Apple Sauce Strawberry, Unsweetened

MFG #ASA10014



- 96 / 4.5oz case pack
- 4.5 oz = 1/2 cup serving (USDA standards)
- USDA Raw Apple commodity code 110149
- Shelf stable in dry storage
- UPC 8 82266 10066 9
- Minimum 2 pallet order or 128 cases total (64 cs per pallet – 1 flavor)
- Gluten Free
- Vegan

Authorized Representative

Jaime Merrill
Corporate QA Technical Sr. Manager
Peterson Farms Fresh, LLC

January 31, 2023

NOTE: Availability and flavor subject to change.

Nutrition Facts

96 servings per container

Serving size 1 Cup (128g)

Amount per serving

Calories **50**

% Daily Value*

Total Fat 0g **0%**

Saturated Fat 0g **0%**

Trans Fat 0g

Cholesterol 0mg **0%**

Sodium 0mg **0%**

Total Carbohydrate 14g **5%**

Dietary Fiber 1g **4%**

Total Sugars 12g

Includes 0g of Added Sugars **0%**

Protein 0g

Vitamin D 0mcg **0%** • **Calcium** 5mg **0%**

Iron 0mg **0%** • **Potassium** 95mg **2%**

* The % Daily Value (DV) tells you how much a nutrient in a serving contributes to a daily diet. 2,000 calories a day is used for general nutrition advice.

INGREDIENTS: APPLES, WATER, NATURAL FLAVOR, FRUIT AND VEGETABLE JUICE FOR COLOR, ASCORBIC ACID (VITAMIN C).





FAMILY OF COMPANIES

Peterson Farms Fresh, LLC

3104 W. Baseline Road • PO Box 95 • Shelby, MI 49455

Phone: 231-861-7101 • Fax: 231-861-2274

FC 1006

Apple Sauce Peach, Unsweetened

MFG #ASA10017



- 96 / 4.5oz case pack
- 4.5 oz = 1/2 cup serving (USDA standards)
- USDA Raw Apple commodity code 110149
- Shelf stable in dry storage
- UPC 8 82266 10068 3
- Minimum 2 pallet order or 128 cases total (64 cs per pallet – 1 flavor)
- Gluten Free
- Vegan

Authorized Representative

Jaime Merrill
Corporate QA Technical Sr. Manager
Peterson Farms Fresh, LLC

February 2, 2023

NOTE: Availability and flavor subject to change.

Nutrition Facts

96 servings per container

Serving size 1 Cup (128g)

Amount per serving

Calories 50

% Daily Value*

Total Fat 0g 0%

Saturated Fat 0g 0%

Trans Fat 0g

Cholesterol 0mg 0%

Sodium 0mg 0%

Total Carbohydrate 14g 5%

Dietary Fiber 1g 4%

Total Sugars 12g

Includes 0g of Added Sugars 0%

Protein 0g

Vitamin D 0mcg 0% • Calcium 5mg 0%

Iron 0mg 0% • Potassium 95mg 2%

*The % Daily Value (DV) tells you how much a nutrient in a serving contributes to a daily diet. 2,000 calories a day is used for general nutrition advice.

INGREDIENTS: APPLES, WATER, NATURAL FLAVOR, CARROT EXTRACT FOR COLOR, PEACH JUICE, ASCORBIC ACID (VITAMIN C).



Blackhive

Product Description:

Ingredients:

Unsweetened Applesauce
Apples, Water, Ascorbic
Acid

Nutrition Facts	
24 servings per container	
Serving size 1/2 cup (126g)	
Amount per serving	
Calories	70
% Daily Value*	
Total Fat 0g	0%
Saturated Fat 0g	0%
Trans Fat 0g	
Cholesterol 0mg	0%
Sodium 0mg	0%
Total Carbohydrate 17g	6%
Dietary Fiber 3g	11%
Total Sugars 13g	
Includes 0g Added Sugars	0%
Protein 0g	
Vitamin D 0mcg	0%
Calcium 8mg	0%
Iron 0mg	0%
Potassium 135mg	2%
* The % Daily Value (DV) tells you how much a nutrient in a serving of food contributes to a daily diet. 2,000 calories a day is used for general nutrition advice.	
Calories per gram:	
Fat 9 • Carbohydrate 4 • Protein 4	



Marketing

Attached Divisions 35
 Super Class 2 - GROCERY - DRY
 Class 17 - FRUITS & VEGETABLES, CANNED & DRIED
 Category 139 - FRUITS, CANNED
 Group 1472 - APPLES, CANNED
 Manufacturer Number 0 - MULTIPLE SOURCES
 Manufacturer GLN Number 0
 Minority Code 1 - NA
 Brand Name MONARCH
 Brand Type 2 - Exclusive
 Country of Origin - Grown/Harvested US - United States
 Country of Origin - Processed

Primary ASYS # 1329127
 Secondary ASYS # 7631682
 Primary PSYS # 161926
 Product Master # 102469
 USF Product # 102469
 Manufacturer Product # 161926
 Item ID 12531105
 Cash and Carry Eligible Yes

Nutritional Values

Household Serving Size 1/2 cup			QTY UOM RDV			QTY UOM RDV			QTY UOM RDV			ALLERGENS	
Recommended Serving Size			g			mg			mcg			Crustacean	None
Serving Size			g			mg			mcg			Eggs	None
Servings per Trade Item			144			mg			mcg			Fish	None
Calories per Serving			50			mg			mcg			Milk	None
Calories from Fat per Serving			0			mg			mcg			Mustard	None
Total Fat			0 g 0%			mg			mcg			Peanuts	None
Saturated Fat			0 g 0%			mg			mcg			Soy	None
Trans Fat			0 g 0%			mg			mcg			Tree Nuts	None
Cholesterol			0 mg 0%			mg			mcg			Wheat	None
Sodium			10 mg 0%			mg			mcg			Allergen Relevant	Data
Total Carbohydrates			13 g 5%			mg			mcg			Relevant	Provided
Dietary Fiber			2 g 7%			mg			mcg			Allergen Relevant	Data
Total Sugar			11 g			mg			mcg			Relevant	Data
Protein			0 g			mg			mcg			Provided	Date
Calcium			6 mg 0%			mg			mcg			CLAIMS Yes/No	
Iron			0 mg 0%			mg			mcg			Cholesterol Free	No
Vitamin C			0%			mg			mcg			Fat Free	No
Vitamin A			0%			mg			mcg			Low Fat	No
Nutrient Relevant Data Provided												Gluten Free	No
Nutrient Relevant Data Provided Date												Lactose Free	No
												MSG Free	No
												Trans Fat Free	Yes
												No Sugar Added (NSA)	No
												No Added Synthetic Hormones	No
												Cup Weight In Grams	No
												Drained Weight(lb)	No
												Manganese	No
												Manganese UOM	No
												Molybdenum	No
												Molybdenum UOM	No
												Selenium	No
												Selenium UOM	No
												UOM	No

Ingredients Sliced Apples and water.

Merchandising

Merchandising Business Unit Name	GROCERY & DAIRY - 100001	GMO Free	No
Merchandising Director Name	COMMODITY GROCERY - 10003	Made from Renewable Resources	No
Merchandising Desk Name	CANNED & FROZEN FRUIT & VEG - 1011	Recyclable	No
		Low In Environmental Toxins(Seafood)	No
		Manufactured without Chlorine or Chlorine Compounds	No
		Marine Stewardship Council Certified	No
		Minimally Processed	No
		No Added Synthetic Hormones	No
		No Organohalogenes Added to Product	No